



Lord Kensington House, 375 Kensington High  
Street  
London W14

GARTON JONES.COM



GARTON JONES  
LONDON

# Lord Kensington House, 375 Kensington High Street London, W14

GARTON JONES.COM

8 Gatliff Road  
Grosvenor  
Waterside  
Chelsea  
London  
SW1W 8DP

Sales +44 (0) 20 7730 5007  
gws@gartonjones.com  
www.gartonjones.com

## £1,200 Per Week

A TWO DOUBLE BEDROOM apartment of approx. 1033 sq.ft (96 sq.m) located in Lord Kensington House at 375 Kensington High Street. This FURNISHED\* apartment has a dual aspect open plan reception room with a smart integrated kitchen with Miele appliances. There are 2 luxury bathrooms (1 en-suite), a BALCONY, a utility cupboard (housing a washer dryer) and storage including wardrobes to both bedrooms. There is a SECURE PARKING space, underfloor heating and comfort cooling. The development provides a 24 hour concierge service, a private cinema screening room and a leisure suite with a swimming pool, gym and sauna. There are also plenty of amenities close by including shops and restaurants. Transport links are excellent with rail, bus and taxi services all within walking distance.

- 1033 Sq.ft (96 Sq.m)
- Two Double Bedrooms
- Open Plan Reception Room
- Kitchen With Integrated Appliances
- Two Luxury Bathrooms (1 En-Suite)
- 24 Hour Concierge
- Private Balcony
- Access To Private Cinema Screening Room, Leisure Suite with Swimming Pool, Gym & Sauna
- Amenities Close By Including Shops & Restaurants
- Excellent Transport Links Within Walking Distance



Available via Garton Jones Chelsea & Belgravia.

\*Please note furniture may differ to that show in the current photos.

Council Tax: Royal Borough of Kensington & Chelsea Council (band G).

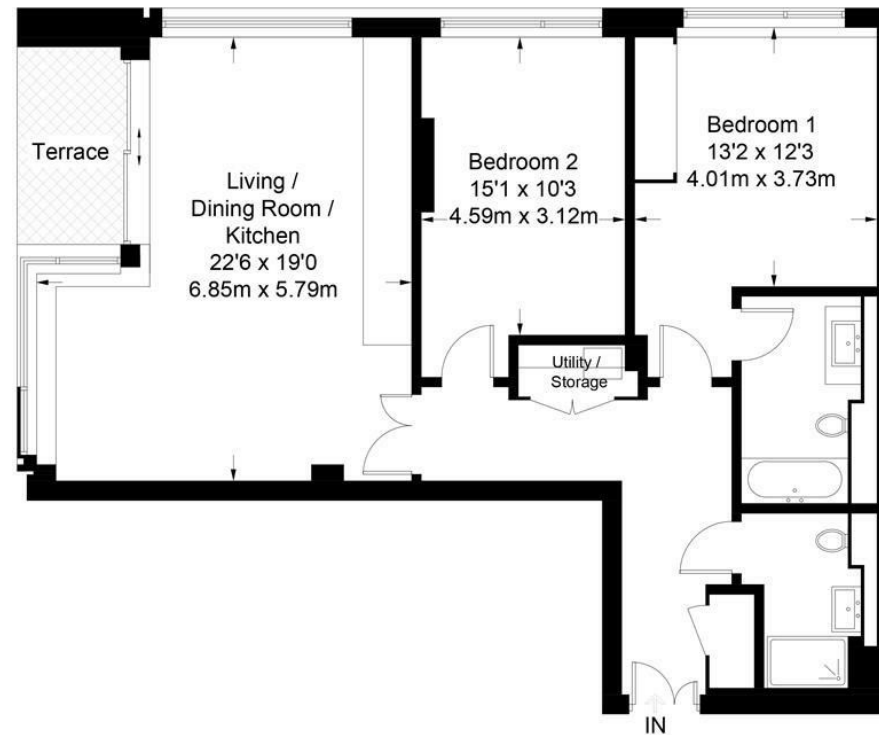
12 month minimum term. 6 week deposit required.

EPC Rating: B (84)

EPC certificate available on request.

## Lord Kensington House

Approximate Gross Internal Area = 1033 sq ft / 96 sq m



Not to scale, for guidance only and must not be relied upon as a statement of fact.  
All measurements and areas are approximate only and have been prepared in  
accordance with the current edition of the RICS Code of Measuring Practice.



